

# River Reintroduction Into Maurepas Swamp



## Issues Addressed

The swamp has been slowly transitioning from forested freshwater swamp to marsh. Disconnection from the river deprived the swamp of the seasonal high and low flows that both enriched the soil and allowed for regeneration of trees.

## Project Benefits

This project is being designed to convey up to 2,000 cubic feet per second of water from the Mississippi River, approximately 5.5 miles to the north into the Maurepas Swamp through the Hope Canal. The specific objectives of the project are to: restore natural swamp hydrology, increase sediment and nutrient loading to the project area, increase substrate accretion, retain and increase existing areas of swamp vegetation including overstory cover, and reduce salinity levels.

## Project Overview

The *River Reintroduction into Maurepas Swamp* project was recommended and unanimously approved by the Louisiana Legislature in both the 2012 and 2017 Coastal Master Plans. This \$200 million project is located in St. John the Baptist, St. James, Ascension, and Livingston Parishes at Mississippi River mile 144.2 near Garyville, Louisiana. This project will benefit approximately 45,000 acres of coastal forest by reconnecting the Mississippi River and the Maurepas Swamp, thereby improving the swamp ecosystem health and function.



## Project Information

### Project Type(s):

Hydrologic Restoration

### Project ID:

PO-0029

### Basins:

Pontchartrain

### Funding Program(s):

CWPPRA, STATE, RESTORE

### Project Phase:

Engineering and Design

### Parish(es):

St. John the Baptist, St. James, Ascension, Livingston

### Estimated Cost:

\$199.9 million

## Project Benefits



### Restoration:

- 45,126 acres benefitted



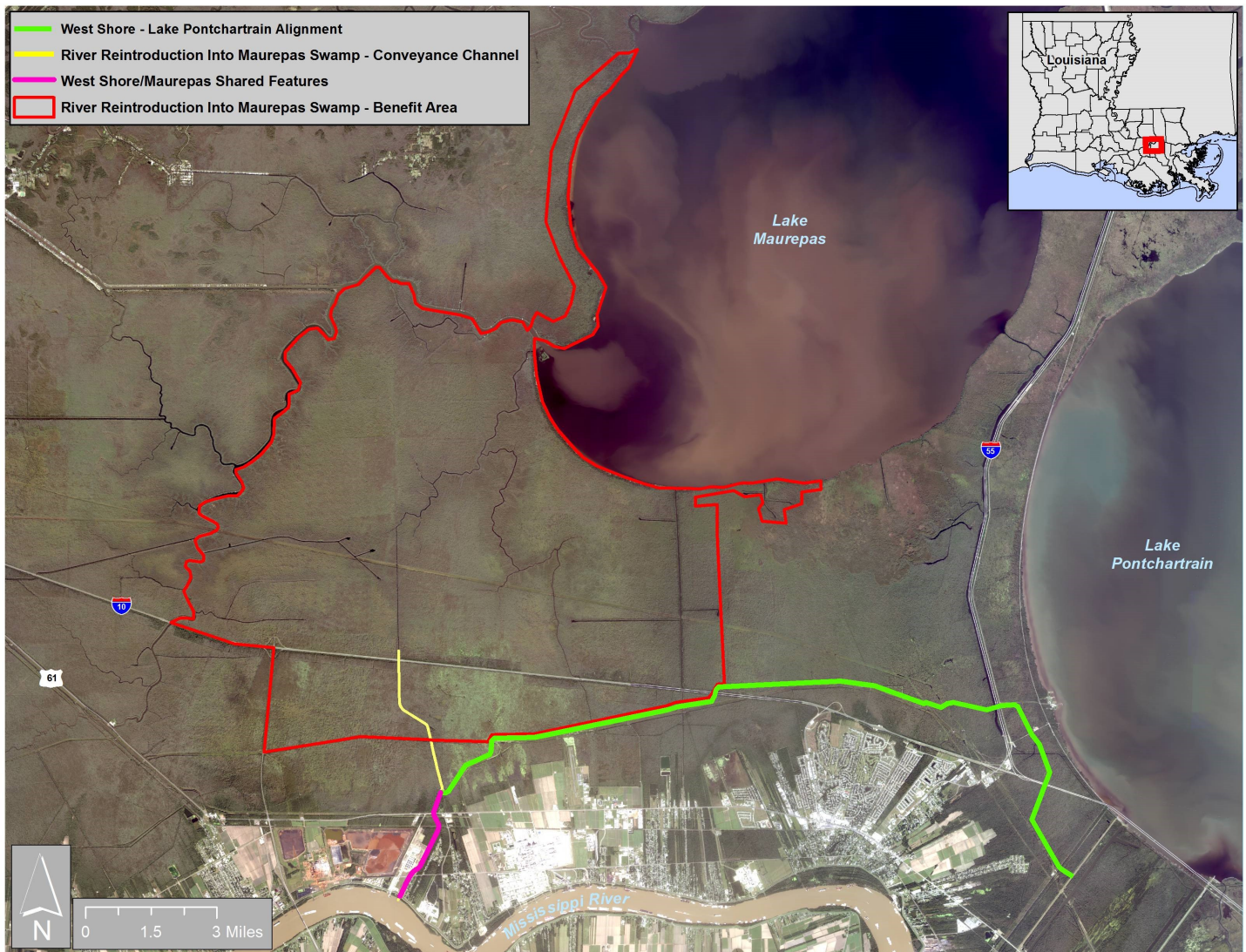
## Project Design and Location

Current design plans involve building a structure capable of delivering up to 2,000 cubic feet per second of water to the swamp. Project plans include the construction of three 10'x10' box culverts in the Mississippi River Levee near Garyville, Louisiana. A new two-mile conveyance channel will flow into the existing Hope Canal which will be enhanced with small earthen levees for the final 3.5 miles into the Maurepas Swamp outfall area just north of I-10. The first two miles will include a newly excavated channel adjacent to the West Shore Lake Pontchartrain Flood Protection Risk Reduction Project.

Other project features include road and railroad crossings, pipeline and utility crossings, and outfall management features such as gaps in canal spoil banks, and low-level weirs on certain bayous to help retain and distribute water throughout the swamp. Construction will not disrupt traffic flow on I-10 or other roadways, and project features will not impede storm water drainage.

## Project Images

The project area below shows the project boundary in red and the conveyance channel in yellow.



**CONNECT WITH US!**



@LouisianaCPRA